

Intro: NeuralTools 5.7

- » Introduction
- » Interface
- » In-use

4-5 NOVEMBER 2010



**PALISADE RISK
CONFERENCE**

Risk Analysis, Applications, and Training

PALISADE

Introduction: Neural Networks

- » Source Data
 - Independent/Dependent
 - Numbers v. Categories
- » Patterns
- » Prediction
- » Mimicking Neurons

4-5 NOVEMBER 2010



**PALISADE RISK
CONFERENCE**

Risk Analysis, Applications, and Training

PALISADE

Introduction: Neural Nets

- » MLF – Multi Layer Feedforward
 - Faster predictions
 - Better suited to outlier data
- » GRN – Generalized Regression Net
 - Numeric prediction
 - Faster training phase
- » PNN – Probabilistic Neural Net
 - Category prediction

4-5 NOVEMBER 2010



**PALISADE RISK
CONFERENCE**

Risk Analysis, Applications, and Training

PALISADE

Introduction: NeuralTools

- » Automated Phases
- » Training
 - Identifies data set with known outcomes
- » Testing
 - Uses data patterns
 - Assesses relationships
- » Predicting
 - Determine outcomes with new data
 - Live Update

4-5 NOVEMBER 2010



**PALISADE RISK
CONFERENCE**

Risk Analysis, Applications, and Training

PALISADE

Interface: Ribbon



4-5 NOVEMBER 2010

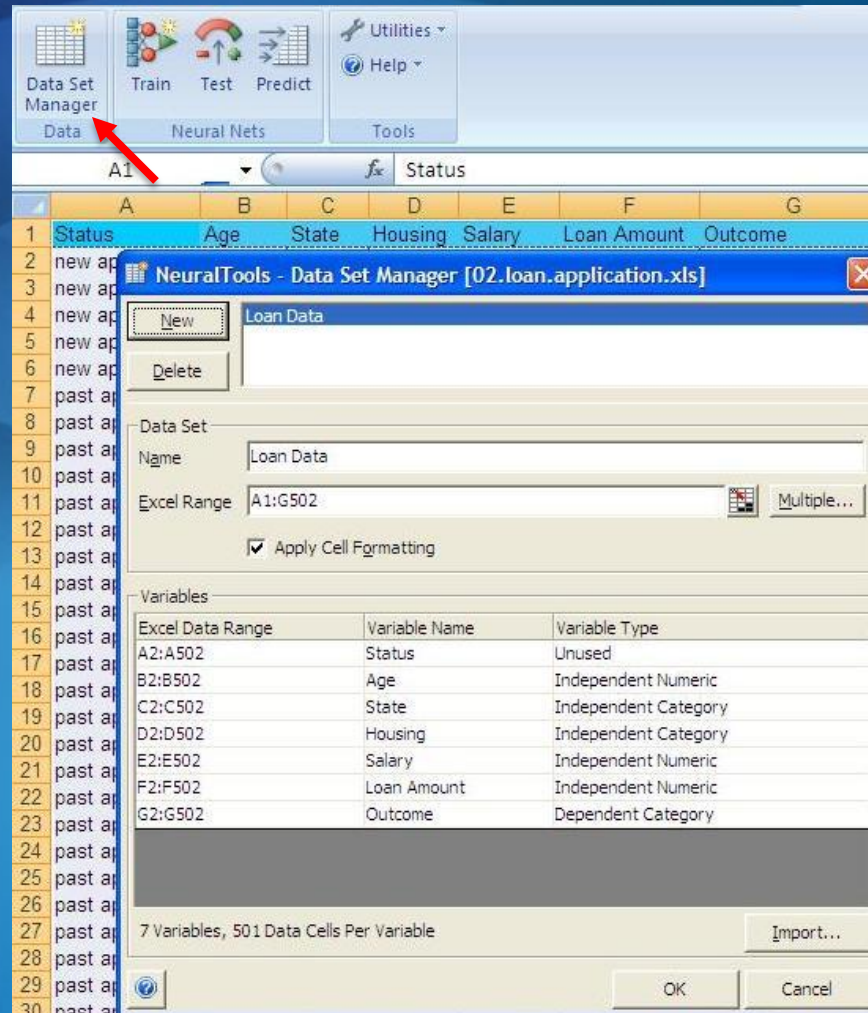


**PALISADE RISK
CONFERENCE**

Risk Analysis, Applications, and Training

PALISADE

Interface: Data Set Manager



4-5 NOVEMBER 2010

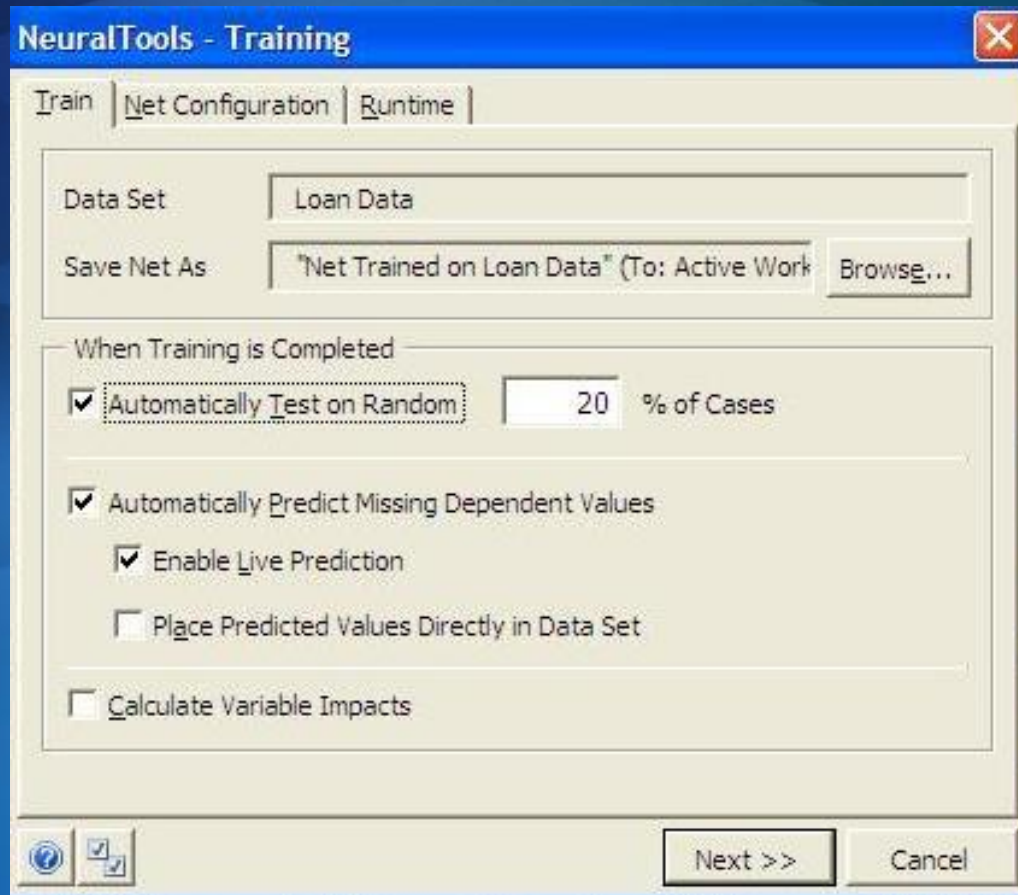
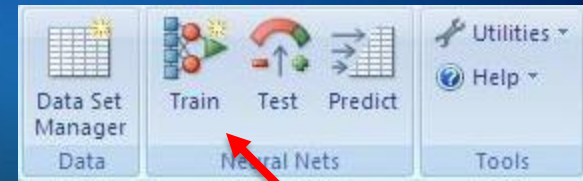


**PALISADE RISK
CONFERENCE**

Risk Analysis, Applications, and Training

PALISADE

Interface: Training



4-5 NOVEMBER 2010

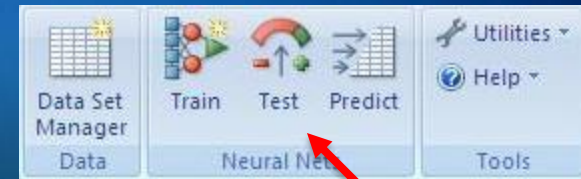


**PALISADE RISK
CONFERENCE**

Risk Analysis, Applications, and Training

PALISADE

Interface: Testing



4-5 NOVEMBER 2010



**PALISADE RISK
CONFERENCE**

Risk Analysis, Applications, and Training

PALISADE

Interface: Predicting



NeuralTools - Prediction

Data Set: Loan Data

Net to Use: Browse...

Variable Matching: Edit...

Predict for:

- Cases with Missing Dependent Values
- All Cases
- Cases with "predict" tag

Options:

- Place Predicted Values Directly in Data Set
- Enable Live Prediction
- Exclude Live Prediction for Cases with Missing or Invalid Values

Next >> Cancel

4-5 NOVEMBER 2010



**PALISADE RISK
CONFERENCE**

Risk Analysis, Applications, and Training

PALISADE

In-Use: Results

- » Placed directly in data set
 - Category
 - Numeric
- » Dynamic linking to data
 - Updates predictions when new data are added

4-5 NOVEMBER 2010



**PALISADE RISK
CONFERENCE**

Risk Analysis, Applications, and Training

PALISADE

4-5 NOVEMBER 2010



PALISADE RISK CONFERENCE

Risk Analysis, Applications, and Training

 **PALISADE**

The logo features a stylized white waveform icon on the left, resembling a sine wave or a signal trace, enclosed within a white square frame. To the right of this icon, the word "PALISADE" is written in a bold, white, sans-serif font.

PALISADE

PALISADE.COM